



6 October 2010

**Nyota Minerals Limited ('Nyota' or the 'Company')**

**REGIONAL AIRBORNE SURVEY COMMENCES**

---

**Highlights**

- Regional airborne geophysical survey has commenced on Nyota's 3550km<sup>2</sup> land holding in Ethiopia
- Regional exploration programme will also include rock, stream sediment and soil geochemical sampling, mapping, trenching and drilling

---

The Directors of Nyota Minerals Limited ("Nyota") announce today that the airborne geophysical survey over the company's total exploration land holding has commenced.

Nyota CEO, Terry Tucker commented "Flying a large airborne survey with this level of detail is, when combined with the existing regional data, an excellent way to identify targets for follow up exploration work. A gold discovery has recently been made within 5 km of our Dura claim block. This knowledge, along with our success at Tulu Kapi, will assist in guiding and prioritising our regional exploration work."

**Regional Airborne Survey**

A 44,700 line km fixed wing airborne geophysical survey has been commissioned through UTS-Aeroquest of Australia and will be flown over 100% of Nyota's exploration properties in Ethiopia. The survey will collect magnetic and radiometric data at a line spacing of 100 m. The information will be used to guide Nyota's regional exploration programme, consisting of rock and soil geochemical sampling, mapping, trenching and drilling.

**Regional Exploration**

Nyota's exploration properties currently consist of the following seven individual claims blocks: 1. Billa Gulliso; 2. Yubdo; 3. Tulu Kapi-Ankore; 4. Mendi; 5. Bambasi; 6. Gombe; and 7. Dura. The first three of these properties, which comprise the core project area surrounding the flagship Tulu Kapi deposit, are 100% owned by the Company. The latter four properties make up the regional tenement portfolio in which Nyota acquired an 80% interest in June 2010. All are held pursuant to exploration licenses which have an initial term of three years and are thereafter renewable annually. The seven properties cover a total area of 3,550 square km. An updated claim map is included in this release as Figure 1.

The Billa Gulliso, Yubdo and Tulu Kapi-Ankore properties have an extensive amount of information available from previous operators. Priority targets include: Kobera, with trench results that include 6.9 m @ 1.34 g/t Au, 5.8 m @ 8 g/t Au; Soyoma, with trench results including 14.2 m @ 8.3 g/t Au;

Dina, with diamond drill results including 7.1 m @ 30.3 g/t Au; Guji, with a 1200m by 200 m soil and geophysical anomaly, trench results including 10 m @ 1.9 g/t Au and diamond drill results of 17.4 m @ 2.77 g/t Au; and Syenite Hill, which exhibits the same intrusive syenite as Tulu Kapi with albitized zones at surface. Several of these targets are drill ready and a number of them are currently the subject of regional mapping and detailed sampling.

Mendi, Bambasi, Gombe and Dura were explored in the 1970s and 1980s for gold and base metals by the Geological Survey of Ethiopia (EGS) under what was called the Guba Exploration Project. As part of that project, geological mapping was conducted at a scale of 1:50,000 and 1:250,000 and stream sediment, rock-chip and heavy mineral concentrates (HMC) geochemical samples were collected. There are a number of good gold mineralisation showings in the area both as primary and alluvial indications, with some of them associated with base metal anomalous zones. These four claim blocks show favourable geological settings, structural settings and good mineral indications. Most of the volcano-sedimentary sequences are dominated by marble and the meta-intrusives ranging from metagranites to metadiorites and metagabbro, suggesting that the properties have excellent prospectivity for new mineral discoveries.

All regional targets will be compiled and ranked according to amount of data available and quality of the relevant anomaly. Follow up exploration work will be prioritized based on this assessment.

Notably, at a recent conference in Addis Ababa, a private company conducting advanced exploration activities 2.5 km north of Dura announced a discovery of over 0.5 million ounces of gold in a skarn type deposit.

**For further information please contact:**

Terry Tucker  
Nyota Minerals Limited  
+44 (0) 20 7379 5012  
terry.tucker@nyotaminerals.com

NOMAD  
Richard Brown  
Ambrian Partners Limited  
+44 (0)20 7634 4709

BROKER  
Guy Wilkes / Will Slack  
Ocean Equities Limited  
(+44) (0) 20 7786 4370

BROKER  
Rory Scott  
Mirabaud Securities LLP  
(+44) (0)20 7878 3360

Press enquiries  
Charlie Geller / Leesa Peters  
Conduit PR +44 (0)20 7429 6604 / +44 (0)75 2823 3383

Or visit: <http://www.nyotaminerals.com>

Figure 1 - 90 m digital elevation model with area to be covered by airborne survey in purple outline

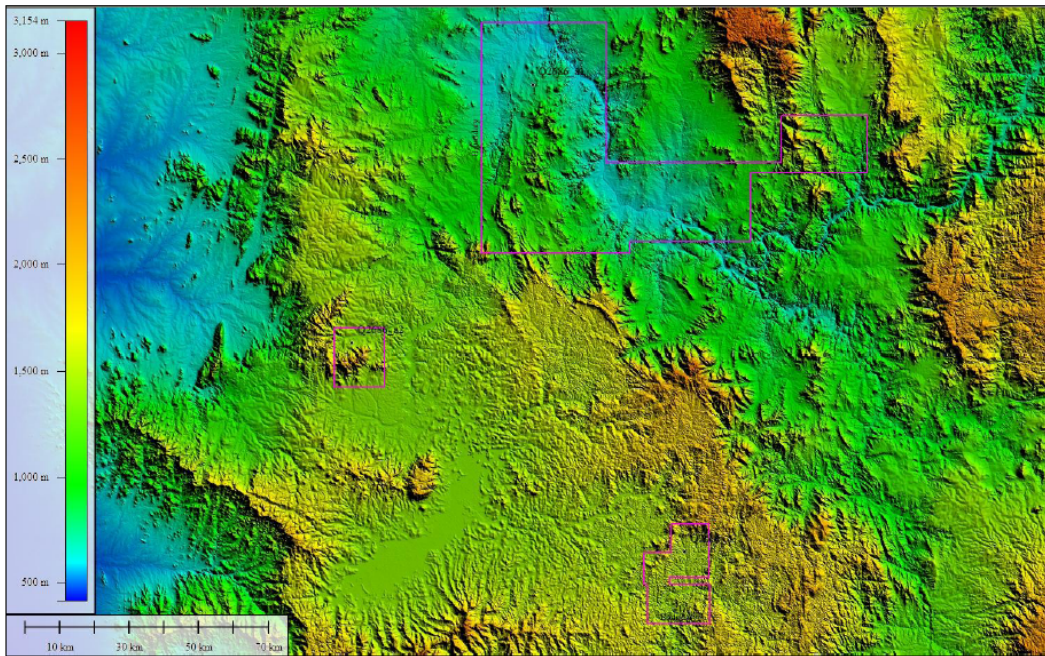


Figure 2 - Nyota exploration properties, Western Ethiopia

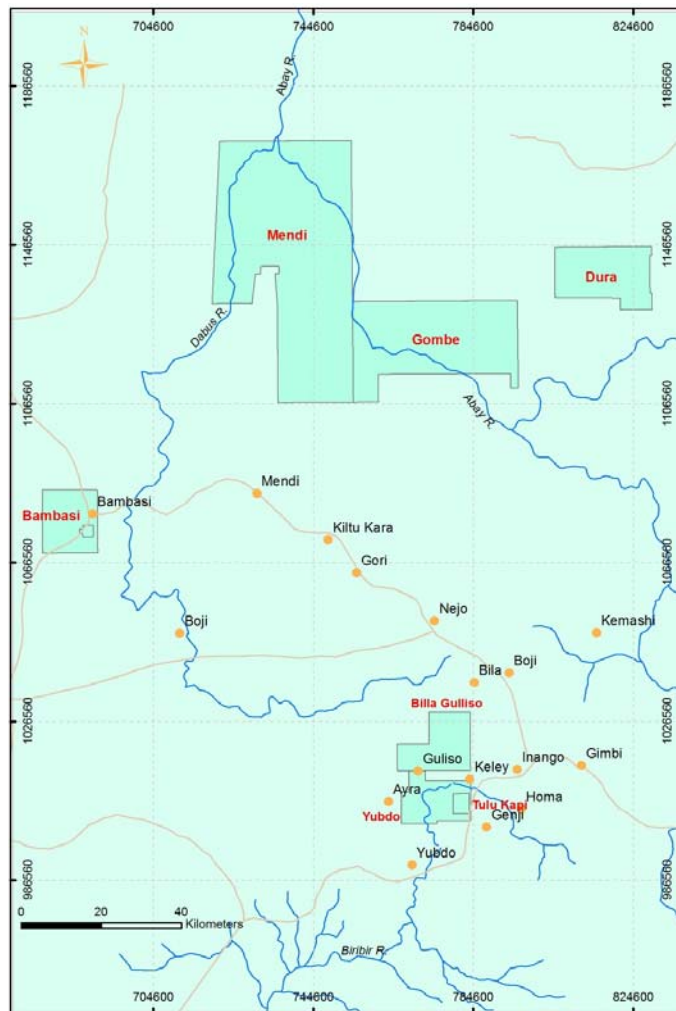
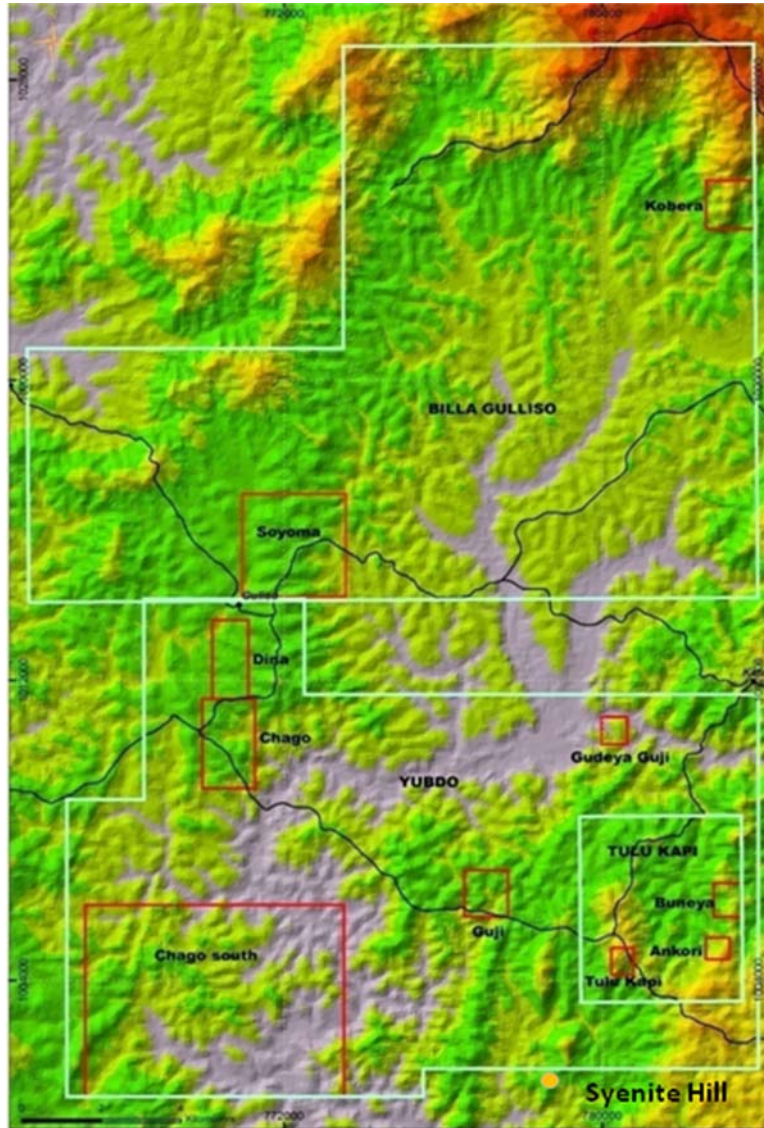


Figure 3 Regional Exploration Compilation Billa Gulliso and Yubdo



The technical exploration and mining information contained in this Announcement has been reviewed and approved by Mr RN Chapman. Mr Chapman has sufficient experience which is relevant to the style of mineralisation and type of deposit under consideration and to the activity to which he is undertaking to qualify as a Competent Person as defined in the 2004 Edition of the 'Australasian Code for Reporting of Exploration Results, Mineral Resources and Ore Reserves and as a qualified person under the AIM Guidance Note for Mining, Oil and Gas Companies. Mr Chapman is an employee of Mineral Exploration Management Limited, an independent geological consultancy established in 2005 and is a member of the Australasian Institute of Mining and metallurgy (Aus.I.M.M).

Mr Chapman consents to the inclusion in this Announcement of such information in the form and context in which it appears.